

## ProfiNet Interface Absolute Multiturn Encoder EAM58



### Description

The ProfiNet Interface Absolute Multiturn Encoder EAM58 Series, has a good resistance to mechanical damage and is also capable of withstanding higher axial and radial loads. Various types of flanges can be used to meet different requirements. It complies with ProfiNet interface protocol and has a max. resolution of 8192 and a max. revolution of 4096. The resolution and revolution can be programmed according to customer requirements. The high speed communication and anti-interference features ensure steady performance during operation.

### Features

- 6 Status indicators, for a fast and accurate understanding of the product status
- 3×M12 Connectors, implement a fast connection
- ProfiNet IO/RT interface with an intelligent diagnosis and high speed data transmission function
- Software configures the application of various parameters - convenient maintenance
- Faster data update, update time ≤1ms

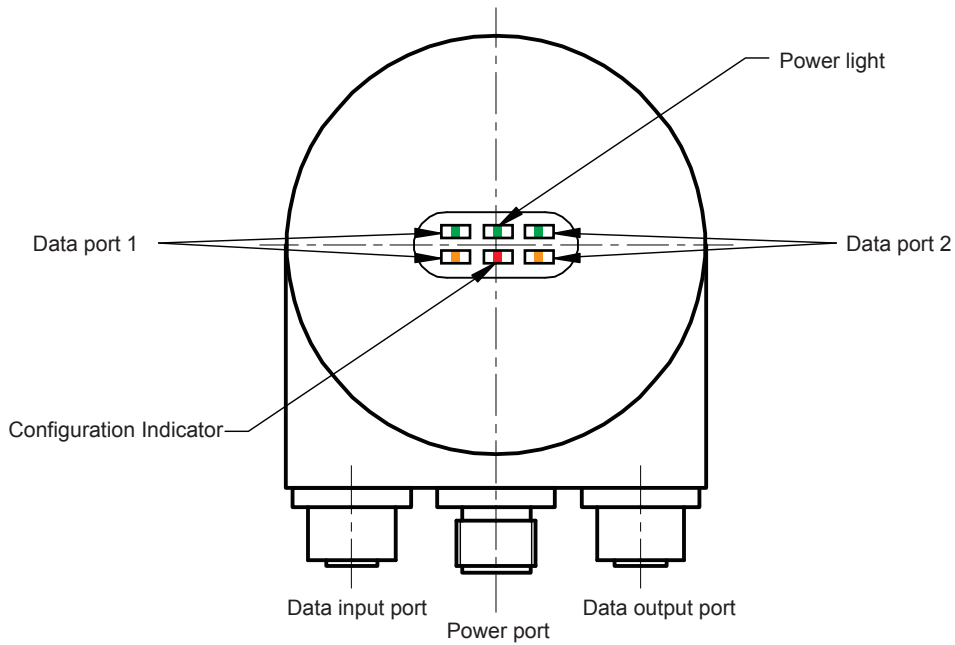
### Mechanical Characteristics

Shaft Diameter(mm)	Φ6g6	-58B
	Φ10g6	-58C
Hollow Shaft Diameter(mm)	Φ8H7/Φ10H7/Φ12H7	-58W
Degree of Protection	IP65	
Speed	6000	
Axial load capacity	40N	
Radial load capacity	80N	
Shock resistance	50G/11ms	
Vibration resistance	10G 10~2000Hz	
Bearing life	10 <sup>9</sup> revolution	
Rotor moment of inertia	approx. 1.8×10 <sup>-6</sup> kgm <sup>2</sup>	
Starting torque	<0.05Nm	
Body material	AL UNI 9002/5 -(D11S)	
Housing material	AL 6060	
Flange material	AL UNI 9002/5 -(D11S)	
Operating temperature	-40°C~~+80°C	
Storage temperature	-45°C~~+85°C	
Weight	~600g	

### Electrical Characteristics

Max. number of laps	4096 (12 bits)
Max. resolution	8192 (13 bits)
Supply voltage	10~30 Vdc
Current consumption (without load)	200mA
Max. bus rate	100 Mbits/s
Linearity	12bits+/- 1/2 LSB
Interfaces	PROFINET IO/RT Class C
Encoder device protocol	V4.1 Class3

# ProfiNet Interface Absolute Multiturn Encoder EAM58



## LED indicator light

Power light:	Green light for breakdown, no light for no power supply
Configuration lamp:	Red light for breakdown, no light for normal configuration
Interface 1/2:	Green/orange light for normal work, no light for not normal

## Data port 1:

Signal	T×D+	R×D+	T×D-	R×D-	
Needle number	1	2	3	4	

## Data port:

Signal	+V	—	-V	—	
Needle number	1	—	3	—	

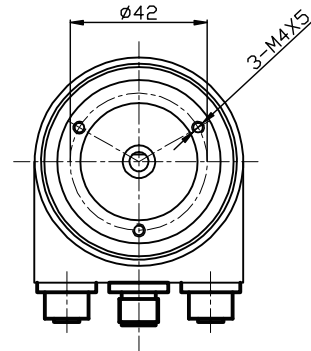
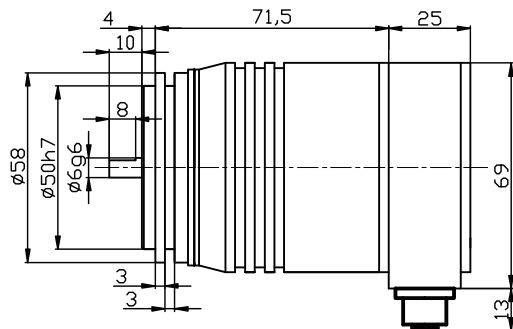
## Data port 2:

Signal	T×D+	R×D+	T×D-	R×D-	
Needle number	1	2	3	4	

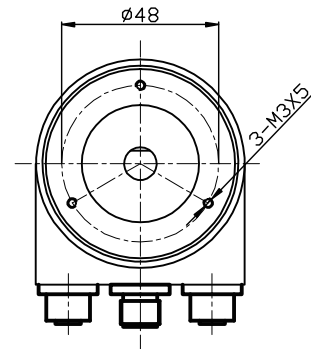
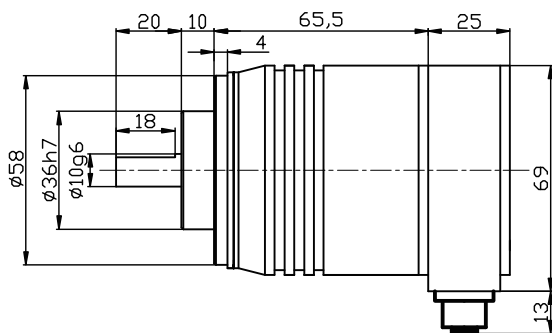
## ProfiNet Interface Absolute Multiturn Encoder EAM58

### Mechanical drawing

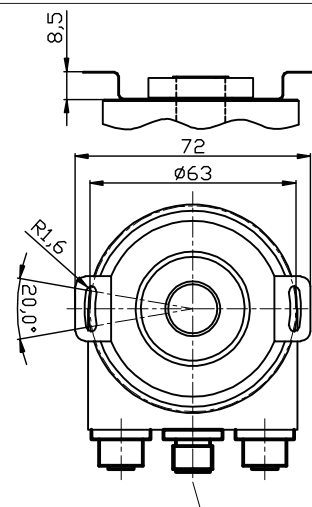
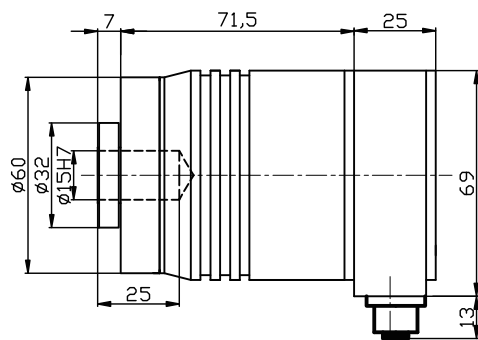
EAM58B



EAM58C

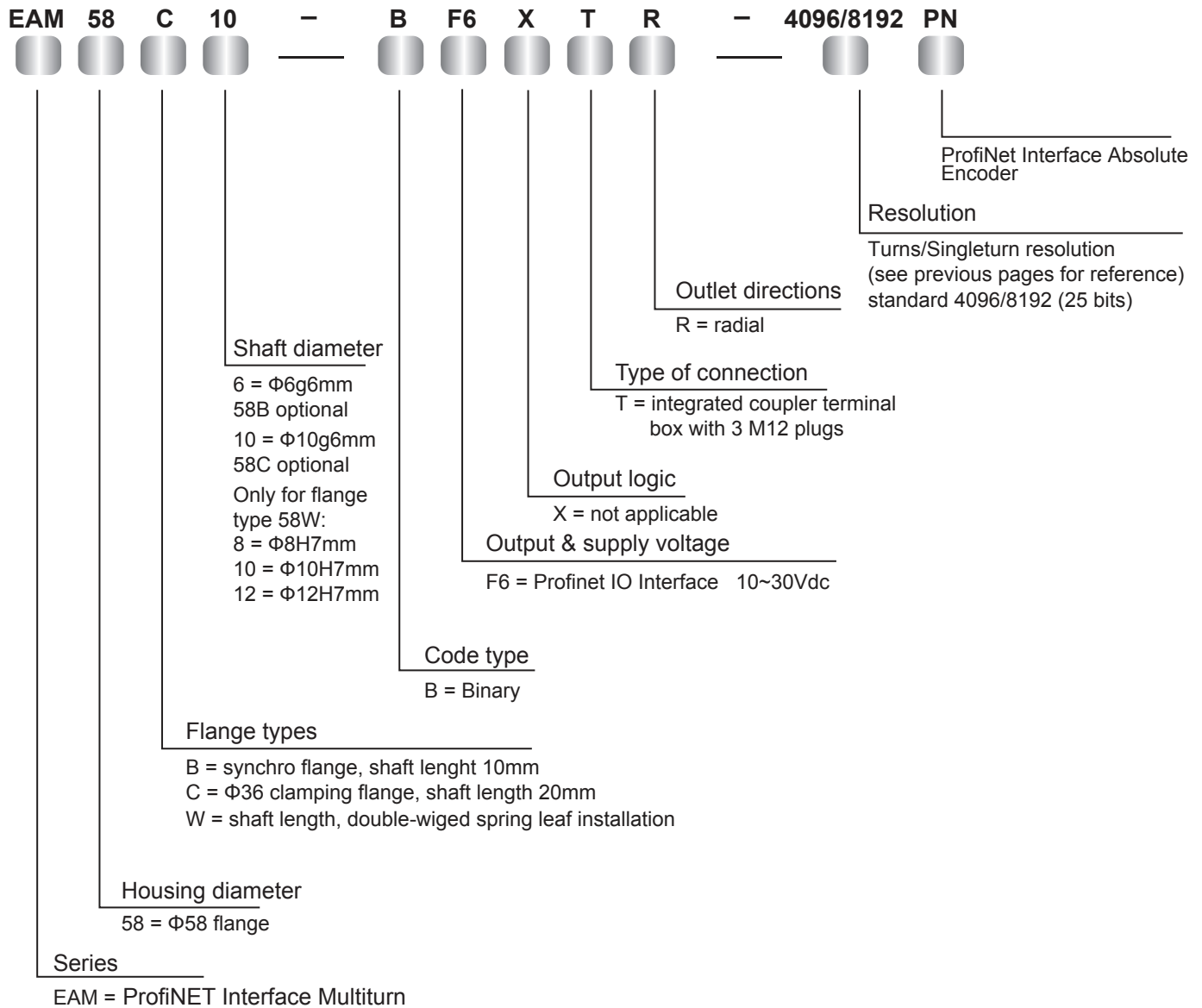


EAM58W



# ProfiNet Interface Absolute Multiturn Encoder EAM58

Order Code:



Mating connectors code:  
 Power supply connector: TMSP 12F-F4  
 Bus input connector: ES06-52  
 Bus output connector: ES06-52